



NORTHLINE
INDUSTRIAL

Test Fixture Bulletin

www.northlineindustrial.com

Motor Vibration Analysis

Automation Repair and Sales

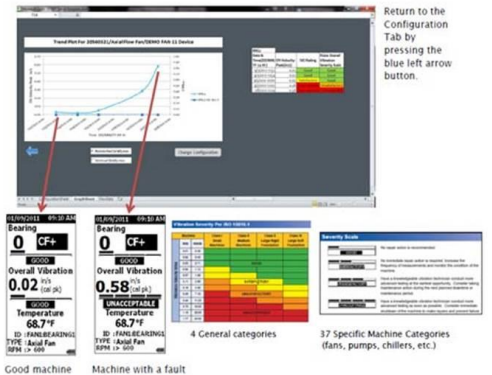
- Electronics
- Robotics
- Servo motors
- Spindle Motors
- CNC
- HMI / Displays
- Operator Stations
- Monitors
- PLCs
- Light Curtains
- Inverter Drives
- AC/DC Drives
- Welders
- Process Controls

Capabilities Include:

- Fans
- Blowers
- Generic gearboxes (rolling element bearings)
- Machine tools Motors (servo, spindle)



The Fluke 805 is a Northline Industrial's latest investment in tools to improve repair quality, document repair variables, and speed our repair process on motor repairs. The 805 is a vibration meter that measures variation caused by device angle or contact pressure. This unit allows us to quickly measure overall vibration, bearing condition, and temperature. These quantitative numbers give us another tool to improve customer uptime by quickly diagnosing issues, documenting baselines for future repair, and as a final quality check on performed repairs. This unit allows for export and trending into an Excel document to track motor health throughout it's lifecycle.



Contact your Northline sales representative for all of your repair needs.

Northline Industrial, Inc.
12238 Woodbine
Redford, MI 48239

Email : info@northlineindustrial.com
eBay : [Northline Industrial Store](#)
Web : www.northlineindustrial.com

Phone : 313-537-9798
Fax : 313-537-9895